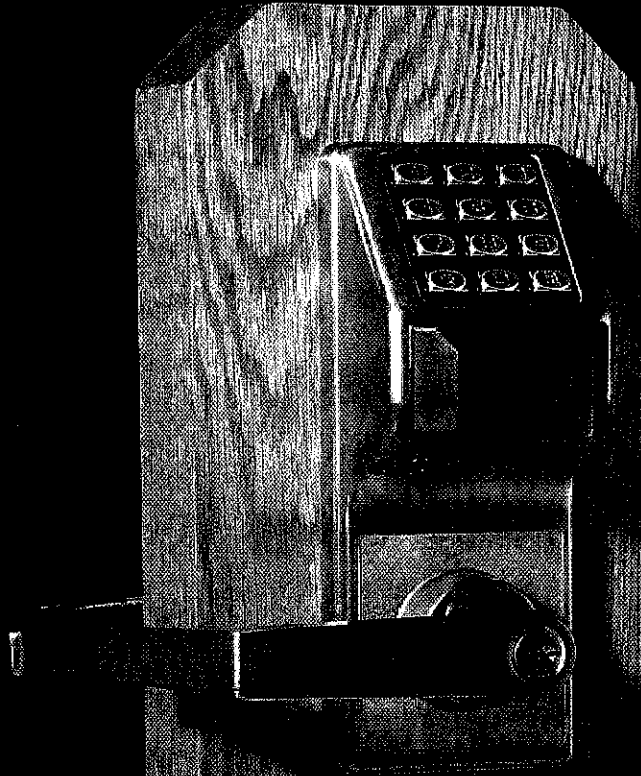


PDL3000 Series

*Feature-Rich Standalone, Proximity/Digital Lock
With Audit Trail Feature*

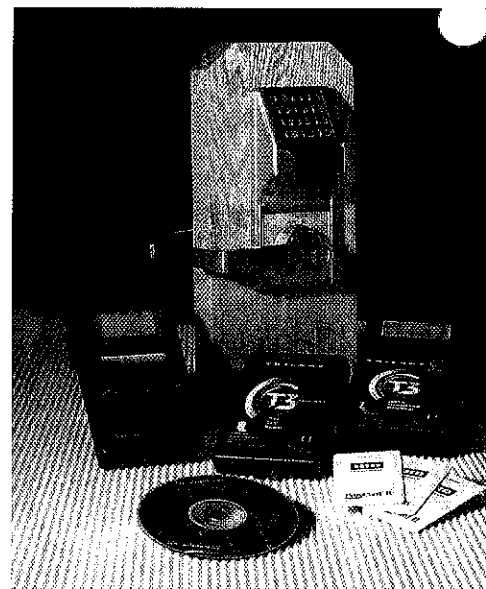


ALARM LOCK

Trilogy[®] Prox Locks
Combination Proximity And Digital Lock
by Alarm Lock

FEATURES

- Accepts most HID Proximity cards and keyfobs including 26 - 48 bit formats
- 2000 User codes; Master; manager; supervisor; basic users
- Users are individually programmed to use a card only, code only, or for the highest security – both card and code
- Card data can be added to software via the lock, card reader module or PC
- Batch enroll feature allows many cards to be quickly added to the software via the lock without the use of a PC
- Weatherproof and operates from -20° F to 151° F (-29° C to 66° C)
- Fingertip (keypad) or Windows PC-programmable
- Program data transferred to lock via AL-PCI (PC interface) or AL-DTM (data transfer module)
- Real time clock enables up to 500 scheduled events and holiday schedules
- Up to 40,000 event Audit Trail with printed time/date-stamped log of all electronic activity can be extracted from the lock by using the AL-IR1 (infrared printer), the AL-DTM (data transfer module) or AL-PCI (PC interface)
- 5 AA batteries furnished; 60,000 cycles typical. Audible low battery alert
- 'Quick Passage' Mode enabled with an authorized user code and function code (does not require lock to be in program mode)
- Available in four finishes (US 26D, 26, 5 & 3), plus special order finishes (including Durondic US10B)
- Comes with either a standard or Regal curved handle trim (Shown on next page)



ADVANCED "SMART" APPLICATIONS

- **Scheduled Events:** Program to lock/unlock; disable/enable users; 4 built-in time schedules
- **Audit Trail with Time/Date Stamp:** Provides a printable record of all electronic activity, including Unlock/lock events, program mode changes, user entry, keypad lockout, remote release events, unauthorized code attempts, etc.
- 4 Programming levels
- 4 User groups
- 3 to 6-digit codes
- One-time service code
- Total user lockout code
- "First-Manager-In" controls three (3) different features: Passage mode, group of users and relay options
- Tri-colored LED indicator shows code acceptance or denial (green or red, respectively), or low battery condition (yellow)
- Non-volatile memory of both programming and Audit Trail activity
- Keypad lockout after numerous attempts to "guess" codes
- Programmable Form C Relay functions for schedules on manual control of CCTV, lighting, ambush function, alarm system, etc.

PDL3000 Series Combination Proximity And Digital Lock

Trilogy® Prox Locks by Alarm Lock

SPECIFICATIONS

Operation: Authorized digital code allows lever to retract latch. Inside lever is always in passage mode and permits instant egress.

Operating Temperature: Weatherproof lock with operating range from -20°F to 151°F (-29°C to 66°C).

Keypad: Weatherproof, all-metal, 12-button programmable for multi-level access functions. Proximity antenna housing molded of ultra high strength, impact resistant Lexan[®]

Programming: Locking modes, event schedules, group or individual user codes, master and management codes, passage and emergency or service code, lockout and remote override capability and allowable entry time (3, 10 or 15 seconds), etc. are programmable through the keypad, the AL-DTM (data transfer module) or Alarm Lock DL-Windows PC Software.

Audit Trail: Lock's activity log can be extracted by using the AL-DTM (data transfer module), the AL-PCI (PC interface) and/or can be on-site printed using the AL-IR1 (hand-held infrared printer)

Power: 5AA alkaline batteries, furnished. Audible low battery alert, visual and audible entry indicators; 60,000 cycles, typical.

Door Thickness: $1\frac{5}{8}$ " to $1\frac{7}{8}$ " standard. For $1\frac{3}{8}$ " doors use HW567 & HW569 spacers. For other thickness', please consult factory.

Backset: $2\frac{3}{4}$ " standard. $2\frac{3}{8}$ " backset also available.

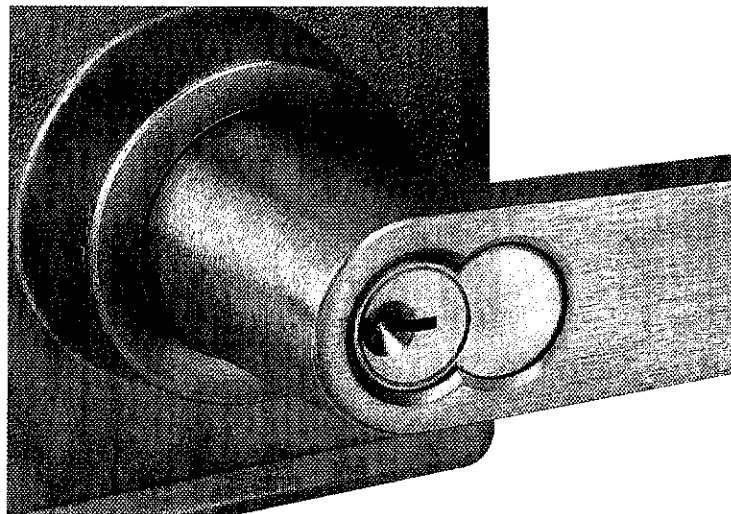
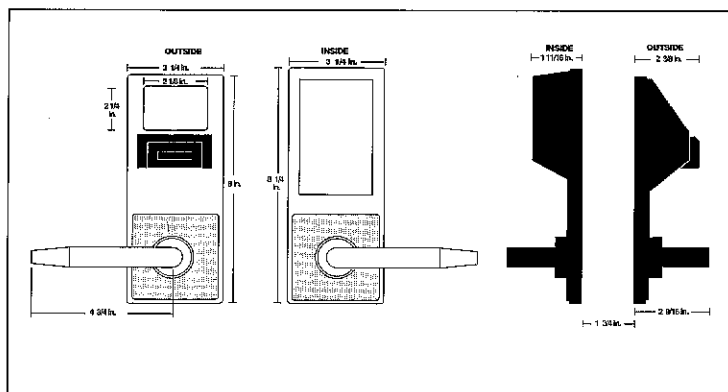
Door Prep: Standard ANSI A115 Series Prep modified by adding additional through-bolt holes.

Cylinder: Solid brass 6 pin tumbler cylinder keyed 5, SCI keyway, furnished in all K.O. models. Tailpieces for Schlage (HW580) & Lori (HW620) cylinders (furnished). Standard IC core models accept Arrow[®], Best[®], Falcon[®], KSP[®] and Kaba Peaks[®] 6 or 7 pin IC core cylinders (not furnished). Alarm Lock tailpiece for use with IC core cylinders is furnished. IC core models prepped for Yale[®], Medeco[®], Corbin-Russwin[®], Sargent[®] and Schlage[®] also available.

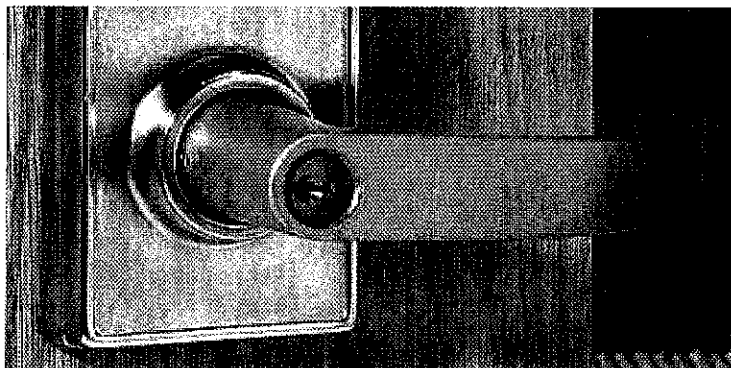
Strike: $1\frac{1}{8}$ " x $2\frac{3}{4}$ " T strike standard. With screws for wood or metal jambs. $1\frac{1}{4}$ " x $4\frac{7}{8}$ ". ASA strike also included.

Finishes: US3 polished brass, US26D satin chrome, US26 polished chrome, US5 antique brass, plus special order finishes (including Durondic US10B).

Compliances: Grade I heavy duty cylindrical lockset. UL listed to the 10C Positive Pressure Specification. Latchbolt is UL listed and 3-hour fire rated. FCC certified. ADA compliant levers.

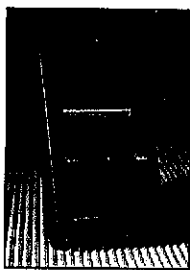


*Interchangeable Core Option
Special Core Preps available*



Regal Handle Trim

AUDIT TRAIL ACCESS OPTIONS



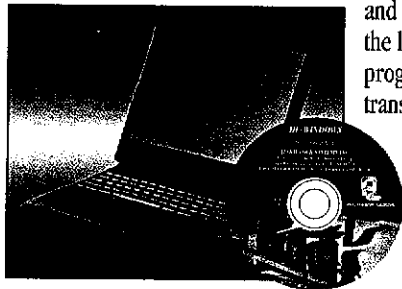
AL-IR1 Infrared Printer:
Prints the event log and user code with hand-held convenience.

AL-DTM Data Transfer Module:
Module used to transfer program data from the PC to the lock and receive Audit Trail from the lock. Can transfer program data for up to 48 locks.



DL-WINDOWS SOFTWARE: Version 2.70 or higher

Windows-format software used to create programming, manager users and schedules, receive Audit Trail from lock, program the lock using PC or laptop, program the AL-DTM to program multiple locks and configure the AL-DTM to transfer data.



AL-PRE: Prox Card Reader/Enroller
Enables instant, automatic enrollment of Prox Cards into DL-Windows

(just tap the prox Card/fob device to the unit's faceplate to enroll!)
Supports all Prox Cards and Prox Keyfobs (supported by PDL3000)

Simultaneous card enrollment, downloading or lock polling – all on just one serial port. Replaces AL-PCI. 9V Battery operation (6 mos. to 1 year, typical)



ORDERING INFORMATION

PDL 30 00 IC /26D -Y

Model & Series:

PDL30 = Trilogy Prox Digital Lock
PL3000 = As above, less keypad

Trim:

00 = Standard Lever
75 = Regal Lever

Cylinder:

IC = Standard Interchangeable Core Prep for Best, Falcon, Arrow, KSP

(Note: No "IC" indicates standard K.O. cylinder.)

Finish:

/3 = US3 Polished Brass
/26 = US26 Polished Chrome
/26D = US26D Satin Chrome
/5 = US5 Antique Brass
/10B = Duronodic (Special Order)

Special Order IC Prep:

-Y = Yale
-M = Medeco
-R = Sargent
-C = Corbin/Russwin
-S = Schlage



ALARM LOCK SYSTEMS, Inc. • A Division of the NAPCO Security Group
345 Bayview Avenue • Amityville, NY • 11701 • USA
1-800-ALA-LOCK (252-5625) • 631-789-4871 • Fax: 631-789-3383
www.alarmlock.com

NAPCO Group Europe Limited

224 Europa Boulevard, Gemini Business Park • Warrington WA5 5TN England
+44 (0) 1925 242428 • Fax: +44 (0) 1925 242429 • www.napcosecurity.com



ALARM LOCK